

# RISE

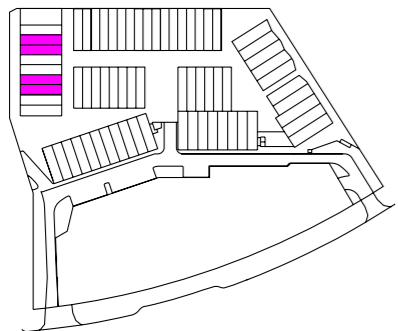
## Dwelling Type

# 3C

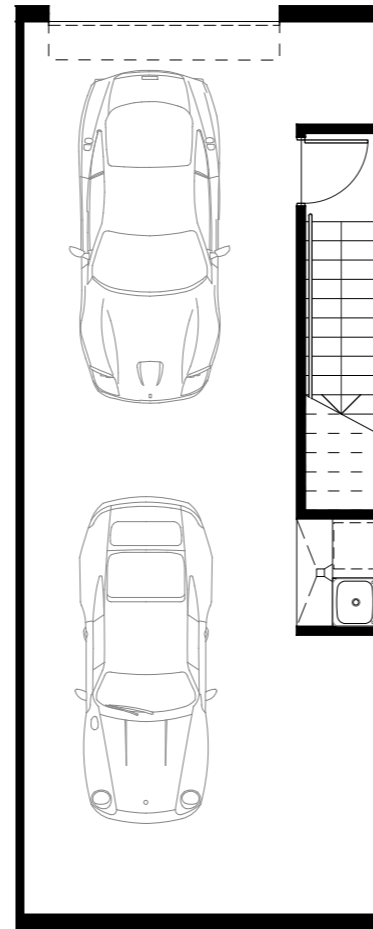
Bedrooms	4
Bathrooms	2.5
Car Spaces	2
Living	120m <sup>2</sup>
Courtyard	28.8m <sup>2</sup>
Garage	52.5m <sup>2</sup>
Total	201.3m <sup>2</sup>

Units	22, 26
Mirrored	23, 27

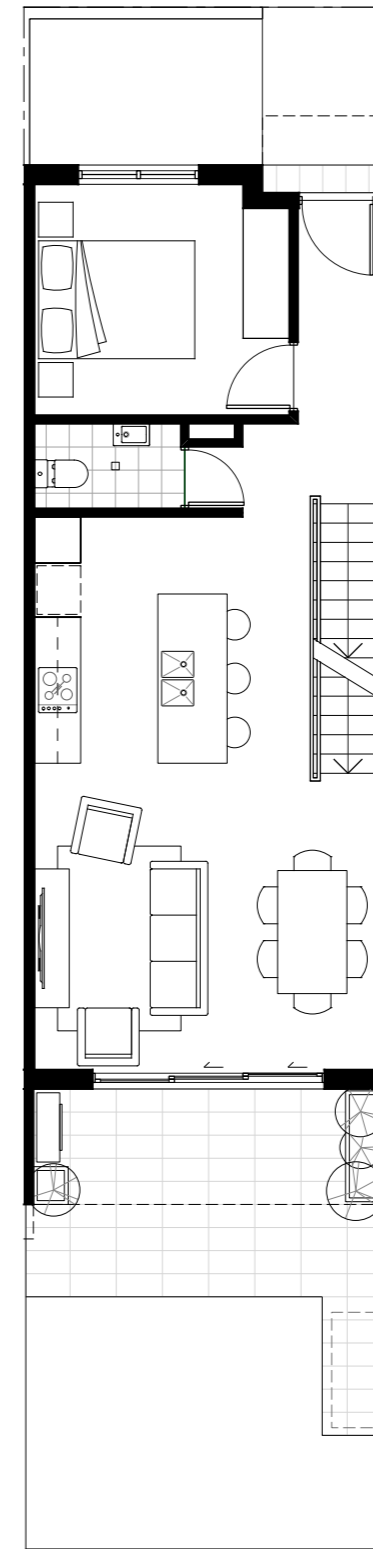
## Location



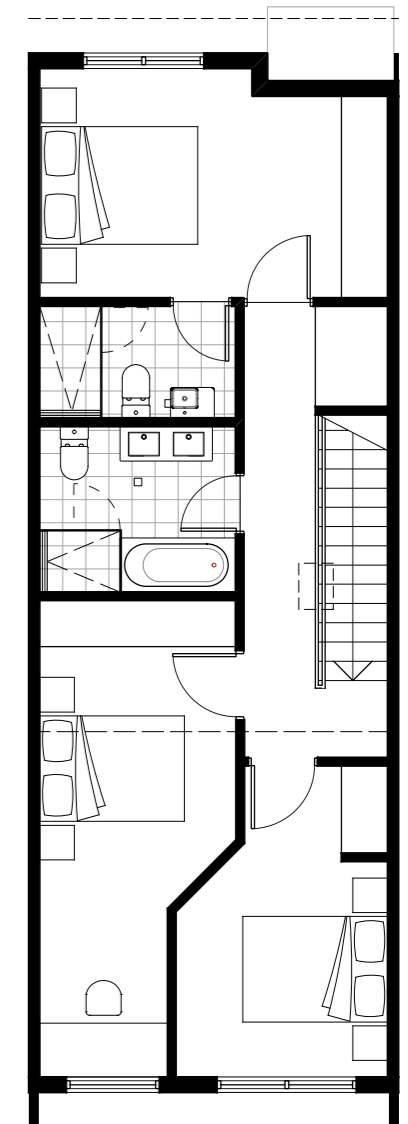
This layout may be subject to minor amendments and dimensional changes to suit final working drawings and grid layouts. Dimensions shown are to structural faces. Gross Floor Area (GFA) is measured to the outside face of external and corridor walls, to the centre line of party walls and includes riser shafts and vertical service ducts. 'Balcony Area' or 'Terrace Area' is measured to the centre line of party walls and to the outside surface of external walls/balustrade.



Garage



Ground



Level 1